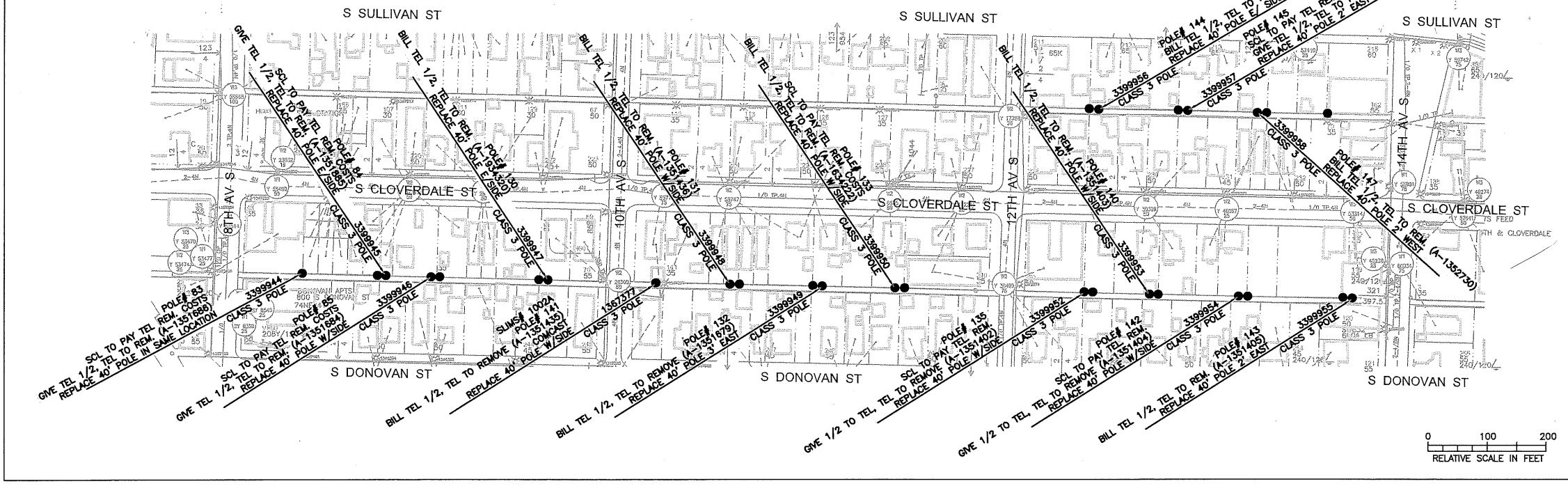


074 NE
NE 32-24-4



LEGEND

SITE PLAN

- TP46 POLE
- V123 VAULT
- ⊠ V123 VAULT UNKNOWN SIZE
- CONDUIT STUB
- ▭ BUILDING OUTLINES
- PAVEMENT EDGE
- PARCEL LINES
- CONDUIT
- INDICATES CHANGE TO CONDUIT
- DIRECT BURIED CABLE
- EASEMENTS
- QUARTER SECTION BOUNDARY
- TOP OF DUCT BANK
- DIRECT BURIED DUCT BANK FLAG
- DUCT QUANTITY
- CONCRETE ENCASED
- BUT UNSPECIFIED USE

PRIMARY DIAGRAM

26C234

- 3-PHASE FEEDER CABLE
- W1 SINGLE PHASE CONDUCTOR
- VAULT ENCLOSURE
- FACILITY TYPE & NUMBER
- 3 PHASE TERMINAL POLE WITH CUTOUPS
- QUARTER SECTION NUMBER
- FUSE QUANTITY, SIZE & TYPE
- LIMITER QUANTITY & TYPE
- SUBLIMITER
- CONDUCTOR END
- STRAIGHT SPLICE
- 1-PHASE TRANSFORMER
- 3-PHASE Y SINGLE TRANSFORMER
- 3-PHASE DELTA SINGLE TRANSFORMER
- 3-PHASE Y TRANSFORMER BANK
- OPEN-DELTA TRANSFORMER BANK
- 3 POSITION J-BOX DEAD BREAK
- 3 POSITION J-BOX LOAD BREAK
- INOPERABLE LOAD BREAK
- OPERABLE LOAD BREAK
- VAULT DETAILS
- SUBMERSIBLE TRANSFORMER
- XFMR PHASE
- XFMR TYPE & NUMBER
- KVA RATING
- SOLID LINE REPRESENTS TRANSFORMER FOOTPRINT
- DASHED LINE REPRESENTS OCCUPIED SPACE
- UG FAULT INDICATOR
- OH STROBE FAULT INDICATOR
- UG CABLE ON PARKING STAND

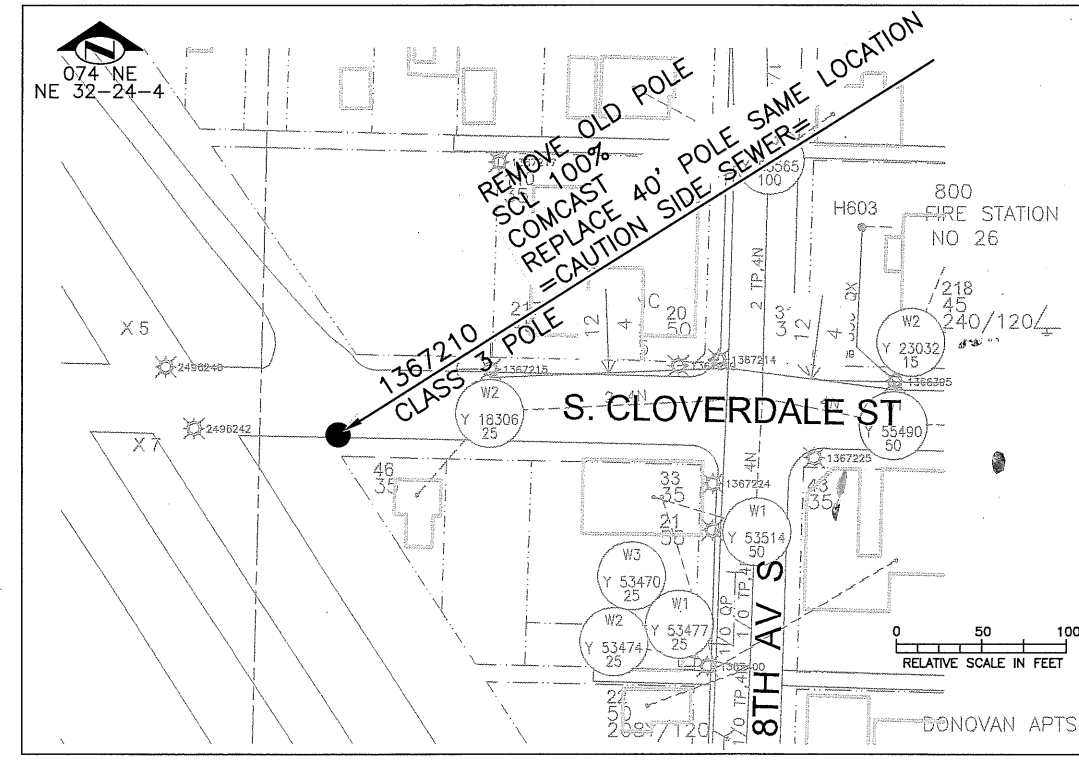
SDOT PERMIT#: 379113

POLE DELIVERY CREW WO: 1802374-05
POLE SETTING CREW WO: 1802374-06

CAUTION: CAUTION: ALLEY BETWEEN S CLOVERDALE ST AND S SULLIVAN ST IS UNPAVED.

SCOPE OF WORK:
REPLACE EXISTING COMMUNICATION POLES IN THE ALLEY WAY (MARKED WITH POLE NOTES) WITH NEW WOOD 40' POLES TO SUPPORT THE ADDITION OF NEW STREET LIGHTS IN THE ALLEY WAY.

REPLACE EXISTING SCL POLE# 1367210 WITH NEW WOOD POLE TO SUPPORT THE ADDITION OF A NEW STREET LIGHT.



REV	DATE	IMAGE	DESCRIPTION

ENDORSEMENTS	
SIGNATURE	DATE
DRAWN: AS	3/5/2018
CHECK:	
APPROVED: HB	3/14/18

Seattle City Light
Distribution Engineering

APPROVED FOR SEATTLE CITY LIGHT

PROJECT ENGINEER: ARMAND SHAWHANAN - (206) 719-2131
SHEET CONTENTS: POLE SITE PLAN
QUARTERSECTION NUMBER(S): 074 NE
SECTION / TOWNSHIP / RANGE: NE 32-24-4

PROJECT TYPE	POLE DELIVERY AND SETTING
PROJECT NAME	SOUTH PARK PROJECT 8604 8TH AVE S
PROJECT ADDRESS	ALLEYS BETWEEN S. CLOVERDALE ST AND S. DONOVAN ST; S. CLOVERDALE ST AND S. SULLIVAN ST FROM 8TH AVE S TO 14TH AVE S

SHEET	1 OF 1
WORK ORDER NO.-TASK	1802374-05/06
CITY	SEATTLE
DRAWING NO.	
REV. NO.	0

THIS DRAWING IS THE PROPERTY OF THE CITY OF SEATTLE AND ITS SEATTLE CITY LIGHT DEPARTMENT. IT IS PRODUCED SOLELY FOR THE USE BY SEATTLE CITY LIGHT AND OTHER CITY DEPARTMENTS. THE USE, REPRODUCTION AND TRANSFER OF THIS DRAWING AND/OR ANY INFORMATION CONTAINED IN THE DRAWING REQUIRES THE WRITTEN PERMISSION OF SEATTLE CITY LIGHT.